

Welcome to  
Göteborg Energis

Quiz!

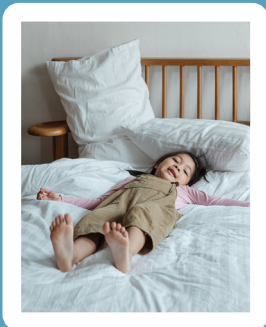


# Quiz!

## Question #1

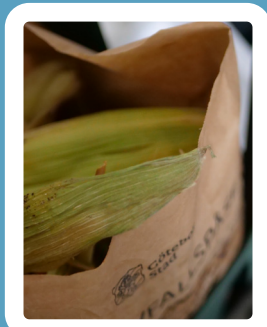
A banana peel can become new energy after you throw it. Where should you throw it?

A



On a bed

B



In the food  
waste bag

C



In your pocket



# Quiz!

## Question #2

What do you need electricity for?

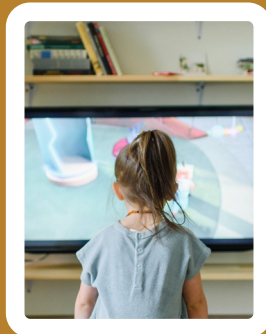


A



Playing  
football

B



Watching TV

C



Eating  
an apple

# Quiz!

## Question #3

How do you get internet access to your computer or tablet?

A



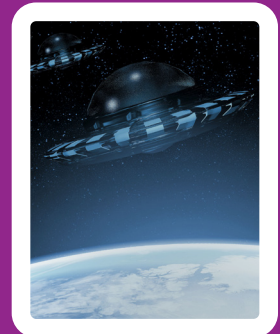
Underground  
cords

B



With a  
magic wand

C



Thanks to  
aliens



 Göteborg Energi

A part of the City of Gothenburg

# Quiz!

## Question #4

Which thing do you not need to charge with electricity?

A



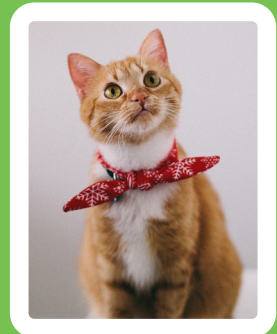
The phone

B



The electric car

C



The cat



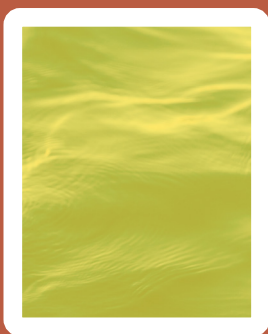
# Quiz!

## Question #5

Did you know that district heating water has the same color as the frog? What color is it?



A



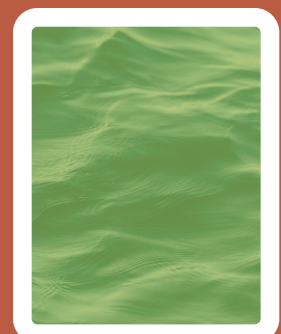
Yellow

B



Blue

C



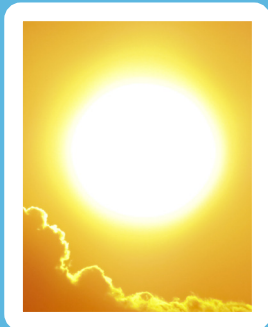
Green

# Quiz!

## Question #6

What can't you make electricity from?

A



The sun

B



Wind

C



Sunglasses





Hooray!

You finished our quiz!  
Great job.



### Minivarvet quiz!

Write your answer in the box.  
Is it A, B or C?

Question #1

Question #2

Question #3

Question #4

Question #5

Question #6



A part of the City of Gothenburg

### Minivarvet quiz!

Write your answer in the box.  
Is it A, B or C?

Question #1

Question #2

Question #3

Question #4

Question #5

Question #6



A part of the City of Gothenburg

### Minivarvet quiz!

Write your answer in the box.  
Is it A, B or C?

Question #1

Question #2

Question #3

Question #4

Question #5

Question #6



A part of the City of Gothenburg

### Minivarvet quiz!

Write your answer in the box.  
Is it A, B or C?

Question #1

Question #2

Question #3

Question #4

Question #5

Question #6



A part of the City of Gothenburg